

Walkup MS Report



Data File	Ad-BPIn-OH with ONOO-_Neg_5mins_MS_04663.d	Sample Name	Ad-BPIn-OH with ONOO-
Sample Type	Sample	Position	P1-A7
Instrument Name	6545 QTof	User Name	Maria Odyniec
Acq Method	Neg_5mins_MS.m	Acquired Time	6/10/2019 11:14:21 AM
IRM Calibration Status	Success	DA Method	Neg_5mins_MS.m
Comment			

Sample Group		Info.	
Walkup Sample Description		Walkup Method	Neg_5Mins_C18
Formula	C10H8O4	Walkup Method Description	Negative mode ionization using C18 column chromatography
Stream Name	LC 1	Acquisition SW Version	6200 series TOF/6500 series Q-TOF B.09.00 (B9044.0)

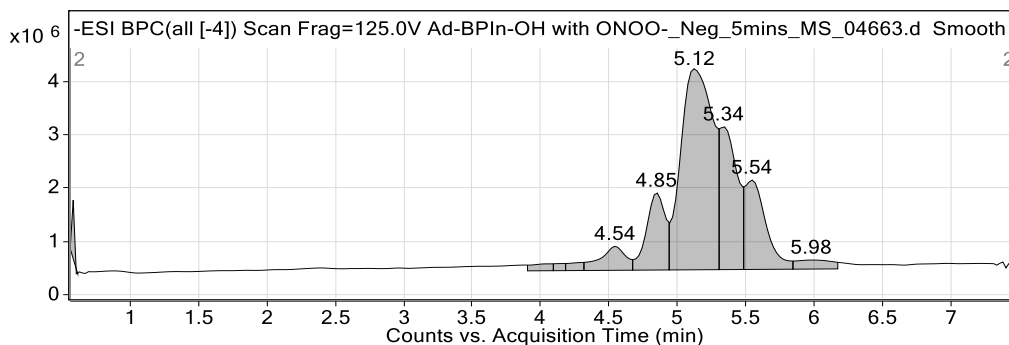


Figure 1: Base peak chromatogram

User Chromatogram Peak List

RT (min)	Area	Area %	Area Sum (%)	Base Peak (m/z)	Width (min)
0.58	1383116	2.25	1.06	1033.9719	0.020
4.00	1374012	2.23	1.05	1033.9793	0.150
4.14	708345	1.15	0.54	1033.9790	0.090
4.25	1151650	1.87	0.88	1033.9795	0.130
4.54	5880853	9.56	4.49	1033.9796	0.190
4.85	13933995	22.65	10.64	1033.9793	0.150
5.12	61528610	100.00	46.99	277.1817	0.260
5.34	23794177	38.67	18.17	277.1818	0.130
5.54	18115552	29.44	13.83	1033.9807	0.160
5.98	3073152	4.99	2.35	1033.9802	0.270

Compound Table

Compound Label	RT (min)	Observed mass (m/z)	Neutral observed mass (Da)	Theoretical mass (Da)	Mass error (ppm)	Isotope match score (%)
Cpd 1: C10 H8 O4	0.61	191.0344	192.0417	192.0423	-3.16	94.27

Mass errors of between -5.00 and 5.00 ppm with isotope match scores above 60% are considered confirmation of molecular formulae

Walkup MS Report



Compound specific information

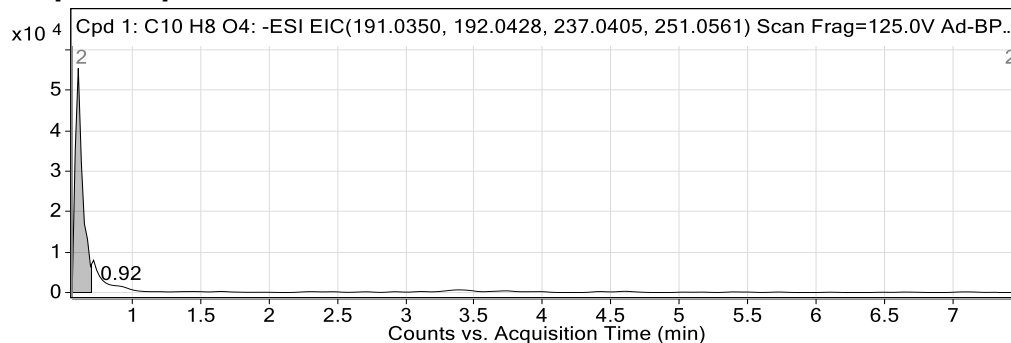


Figure: Extracted ion chromatogram (EIC) of compound.

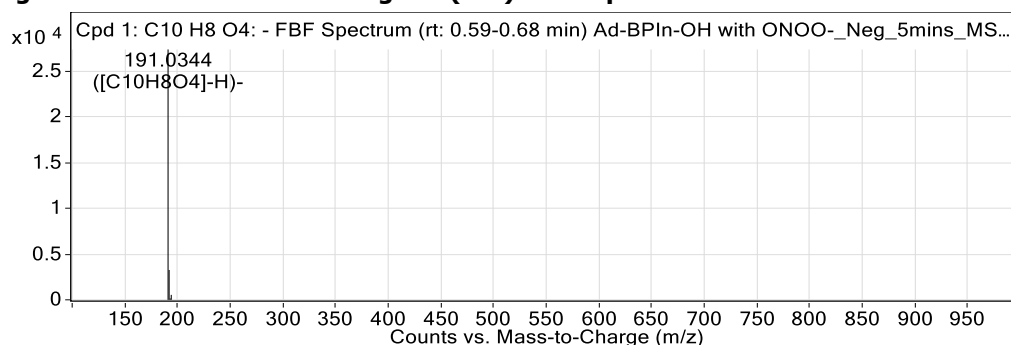


Figure: Full range view of Compound spectra and potential adducts.

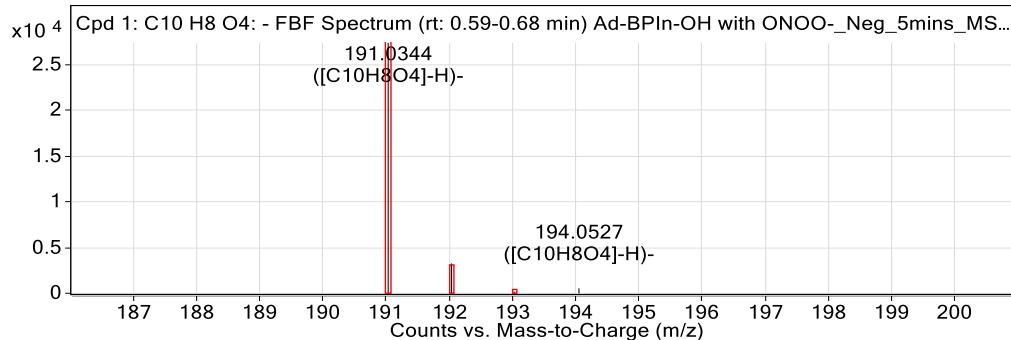


Figure: Zoomed Compound spectra view
(red boxes indicating expected theoretical isotope spacing and abundance)

Compound isotope peak List

m/z	z	Abund	Formula	Ion
191.0344	1	27370.3	C ₁₀ H ₈ O ₄	(M-H) ⁻
192.0367	1	3262.7	C ₁₀ H ₈ O ₄	(M-H) ⁻
193.0296	1	162.2	C ₁₀ H ₈ O ₄	(M-H) ⁻
194.0527	1	541.9	C ₁₀ H ₈ O ₄	(M-H) ⁻

--- End Of Report ---